

Wastewater Infrastructure Funding

Department of Environment and
Natural Resources
Division of Water Quality



John R. Blowe, PE, Chief

Construction Grants & Loans Section

919-715-6212

www.nccgl.net

bobby.blowe@ncmail.net



A decorative border consisting of overlapping US dollar bills, primarily \$100 bills, is visible on the left and right sides of the slide. The bills are slightly blurred and arranged in a grid-like pattern.

Department of Environment and Natural Resources Wastewater Programs

- 1) Clean Water State Revolving Fund (CWSRF)
- 2) State Loans
- 3) High Unit Cost Grants
- 4) EPA STAGS

AVAILABILITY

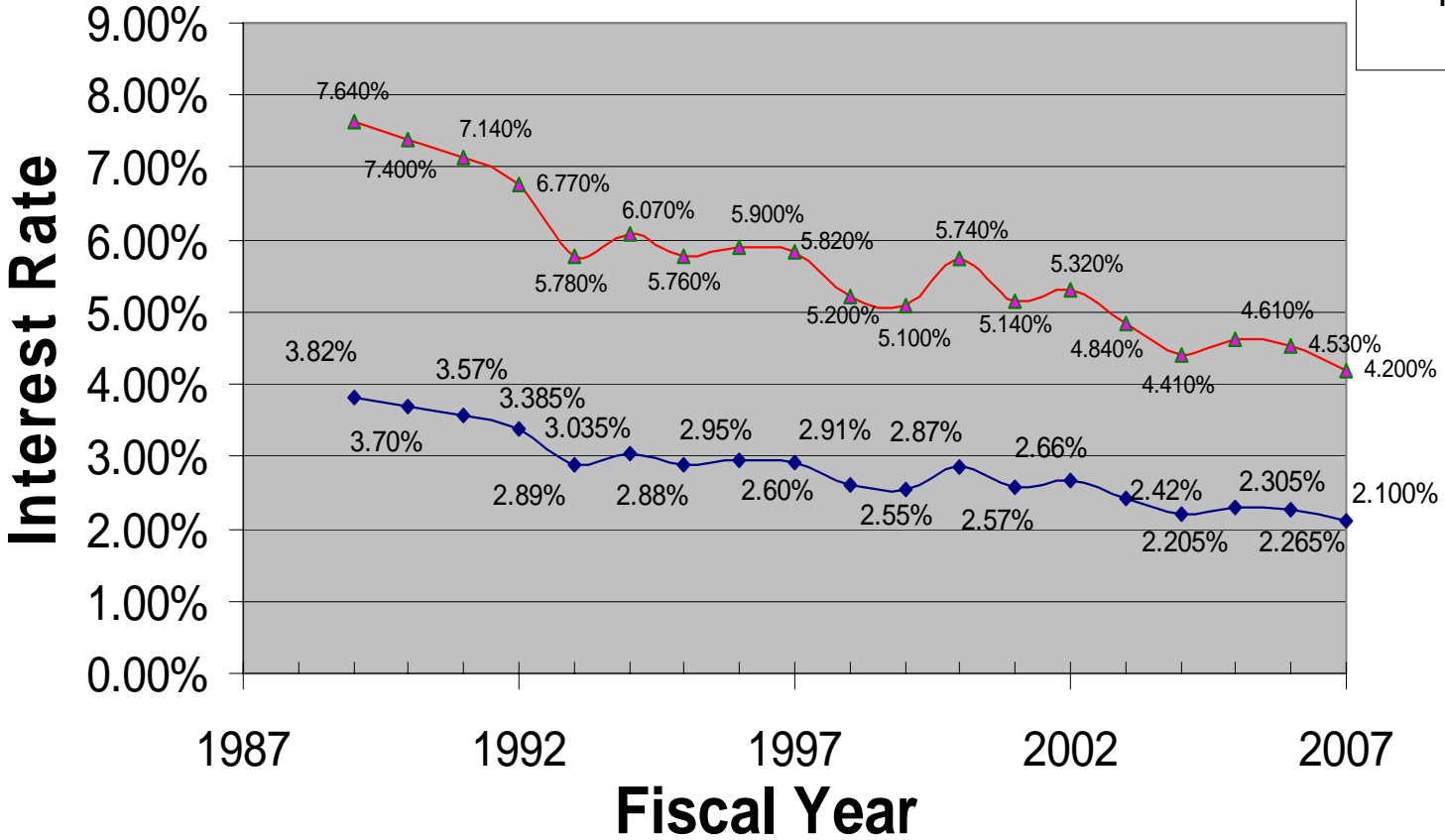
- SRF – approximately \$70 million/yr
- SRL – approximately \$2 – 2.5 million/yr
- SEL – approximately \$0.6 – 0.7 million/yr
- High – Unit Cost Grant – \$238 million from 1998 Critical Needs Bond Act
- STAG's – per Congress

SRF/SRL ADVANTAGES

- Interest rates @ $\frac{1}{2}$ market rate
- 0% Loans possible w/SRL for qualified applicants
- No interest during construction
- Up to 20 year payback
- 1st Payment at least 6 months from project completion

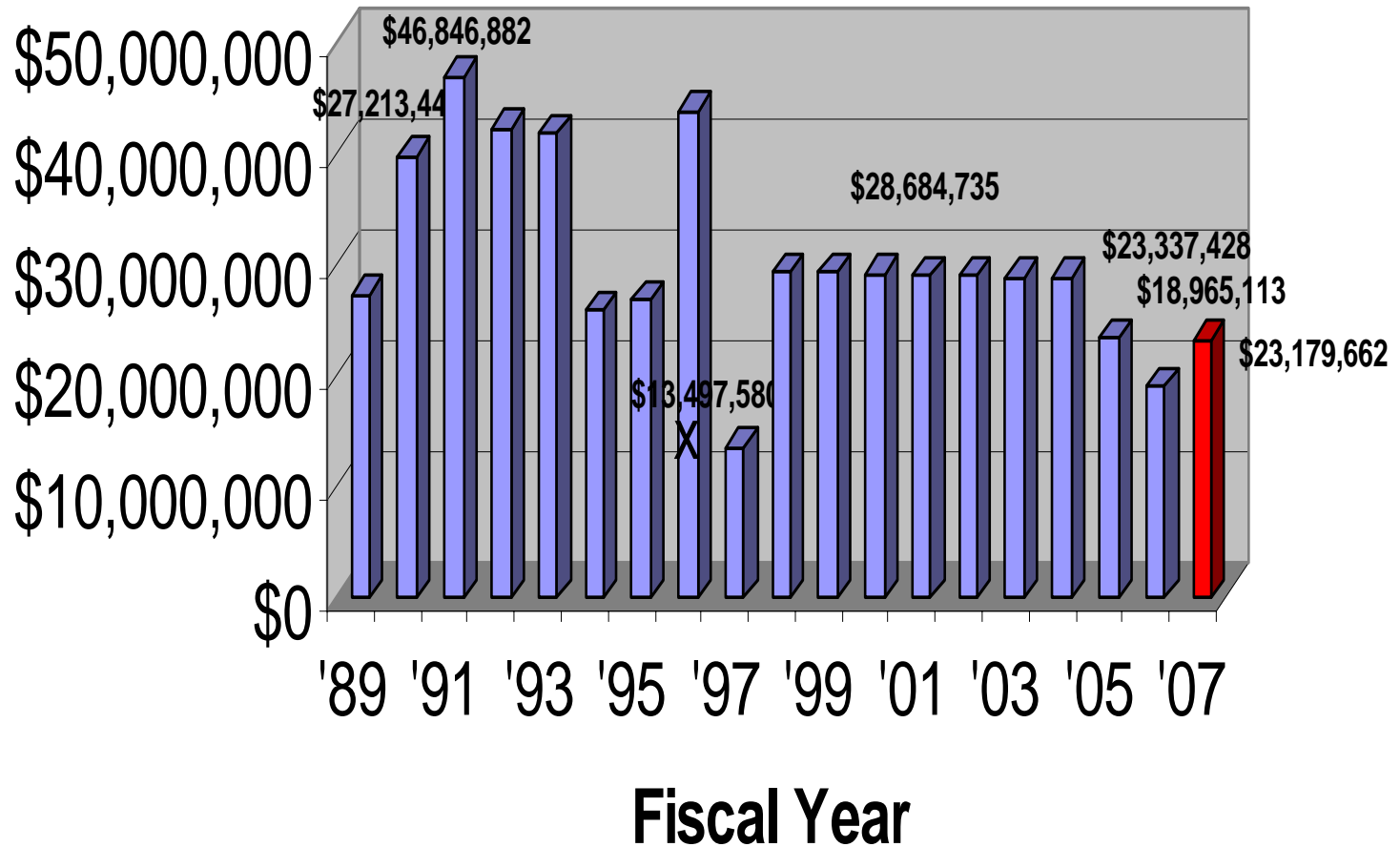
Interest Rate History

- ◆ SRF Interest Rates
- ▲ Market Rate *

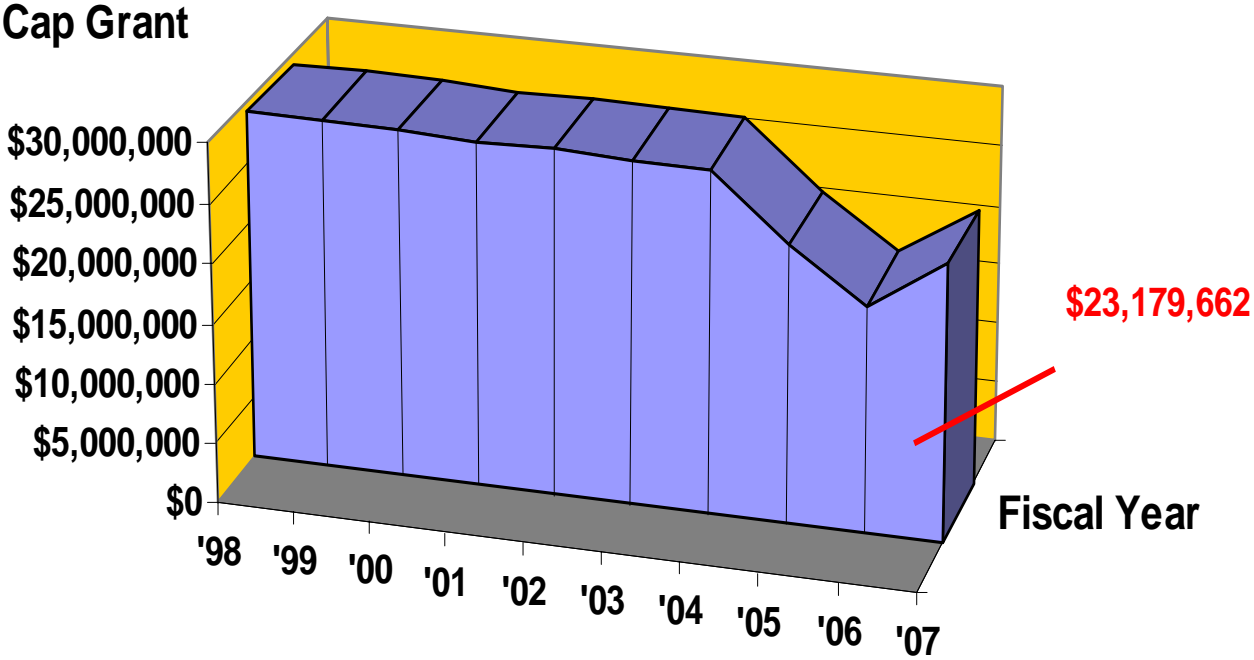


* Market rate is measured as the Bond Buyer 20-Bond GO Index

Capitalization Grants

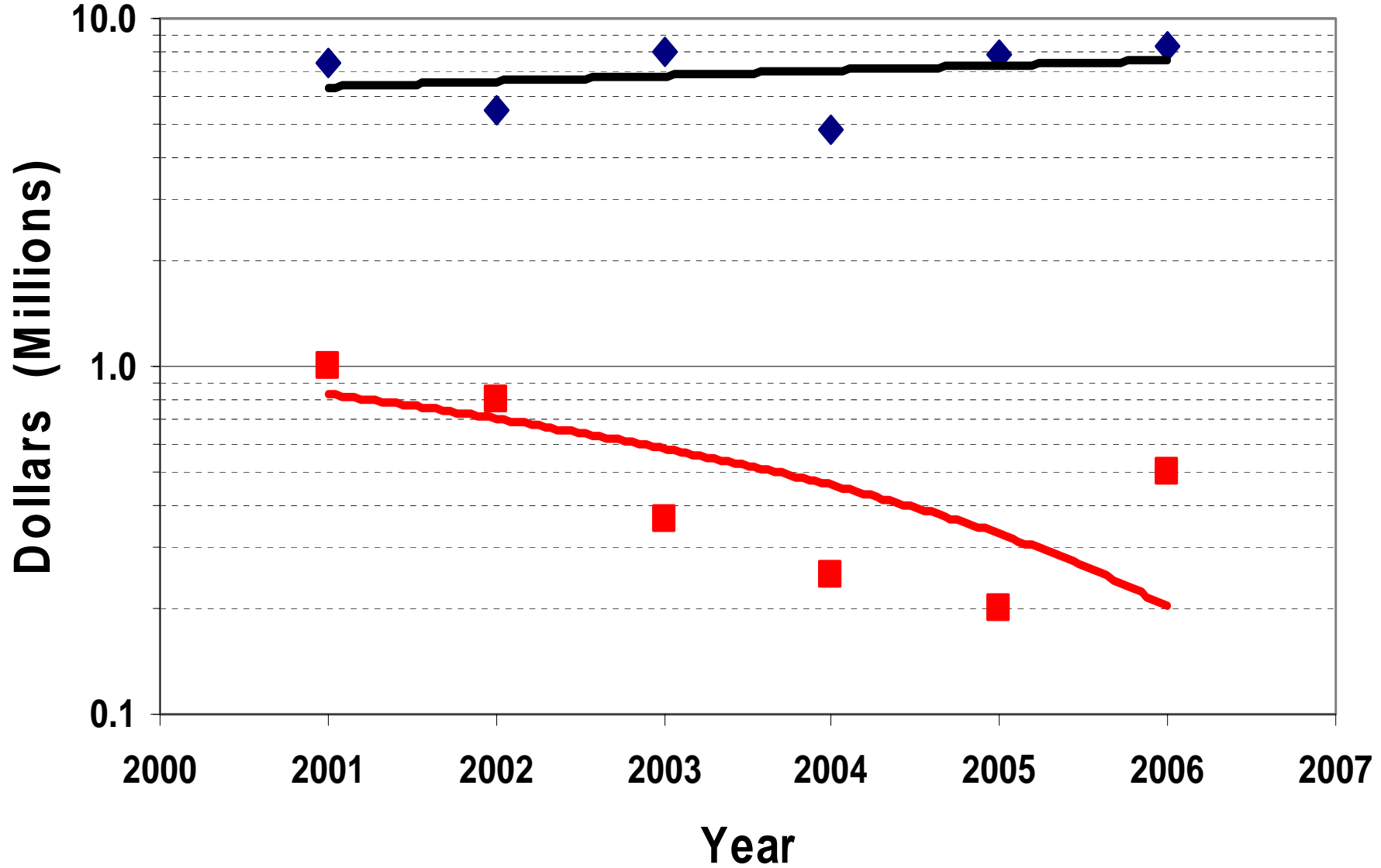


1998-2007 Cap Grant Trend



NC STAG Funding

- ◆ Total Dollars
- Median Project



A decorative border consisting of multiple US dollar bills, primarily \$100 bills, arranged in a grid-like pattern along the left and right edges of the slide. The bills are slightly overlapping and have a soft, semi-transparent appearance.

Engineering Reports

- Alternatives Analysis
- Capital Cost
- Present Worth Analysis
- System/Financial Viability
- User Charges

Environmental Assessment

NORTH CAROLINA CLEAN WATER STATE REVOLVING FUND					10/25/2005
INTEGRATED PRIORITY RATING SYSTEM					
<i>(for projects anticipated to be ready to proceed within 12 months)</i>					
<u>EXISTING CONDITIONS (Max 10 points):</u>					<u>SCORE</u>
Surface Water Pollution					
1) Sanitary Sewer Overflow (SSO)				8	
2) Wastewater Treatment Facilities (WWTP)				7	
3) Excessive Infiltration and Inflow				6	
4) Collection System / Pump Station / Force Main (No SSO)				3	
5) <i>Add Points if under Moratorium / SOC / JOC</i>				2	
Stormwater Treatment / Management Facility					
1) Addresses / Removes Direct Discharge				8	
2) Other Non-Traditional Stormwater Quality Project				5	
Groundwater Pollution					
1) Documented Failing Septics				7	
2) Landfill Leachate Collection / Treatment				7	
3) Other Groundwater Pollution Source				5	
Aquatic / Riparian Habitat and Stream Degradation					
1) Streams, Creeks, and Estuary Restoration				5	
<u>WATER QUALITY IMPROVEMENT CRITERIA (Max 10 points)</u>					
Surface Water Restoration					
1) Project benefits a waterbody on the 303 (d) list w / TMDL				8	
2) Project benefits a waterbody on the 303 (d) list <i>without</i> TMDL				6	

Surface Water Protection				
1)	Class "SA" (Shellfish Waters), Class "WS-I" or WS-II (Water Supply Source), Class "ORW" (Outstanding Resource Waters), or "HQW" (High Quality Waters)	10		
2)	Class "WS III", "WS IV", or "WS V" (Water Supply Source)	8		
3)	Class "B" or "SB" (Bathing Waters)	6		
4)	Class "C" or "SC" (Fishing)	4		
Groundwater Protection				
1)	Project benefits Class "GA" Groundwater	8		
FINANCIAL NEED (MAX 5 POINTS)			SCORE	
1)	The annual average residential cost of water, wastewater, and stormwater fees exceeds 2.0 % of the median household income of the community, <i>or</i>	3		
2)	The annual average residential cost of water, wastewater, and stormwater fees exceeds 1.5 % of the median household income of the community, <i>and</i>	2		
3)	20 (Total Bonded Indebtedness plus Total Estimated Project Cost) divided by the Total Appraised Property Valuation. Note: 20 is a factor to add points	2		
BONUS				
	Project will provide for or become part of a regional system	2		
TOTAL SCORE			<hr/>	